



*Smart***CLOUD™** Compute PA Performance Agent

Resources Control and Performance Showcase

SmartCLOUD™ Compute PA (Performance Agent) provides online portals to manage and monitor cloud performance. Accompanying with SmartCLOUD™ Compute, it pools virtual infrastructure resources in existing datacenter and transforms them to catalog-based service. Maximum visibility on the resource utilization down to Virtual Machine (VM) level can be achieved through the monitoring and reporting capabilities.

SmartCLOUD™ Compute PA consists of two sophisticated portals: (1) A Management Portal which allows enterprises to command their resources deployments when needed. (2) A Reporting Portal which provides enterprises a real-time picture of their services consumption level for better resources planning now and in future.

HIGHLIGHTS

SmartCLOUD™ Compute PA enables customers to manage and monitor cloud performance.

- **AGILITY**
Increases business agility by empowering enterprises to deploy pre-configured services or custom-built services with the click of a button through a user-friendly self-service portal
- **CONTROL**
Maintains security and controls over a multi-tenant environment with policy-based user controls
- **VISIBILITY**
Easily retrieves historical records of resources consumption and real-time monitors individual virtual machines usage so as to facilitate resources management and project planning
- **PORTABILITY**
Provides a more compatible model for virtual computing resources pool management and security that allows complete application portability across clouds

Your Global Local ICT Solutions Partner



Key Features of SmartCLOUD™ Compute PA

Taking Command of Your Need

SmartCLOUD™ Compute PA pools the subscribed infrastructure resources, including CPU, memory, storage, network and port, enabling IT organizations to allocate and deliver IT resources to various internal users for meeting different business demands in real-time.

Infrastructure Service Catalog

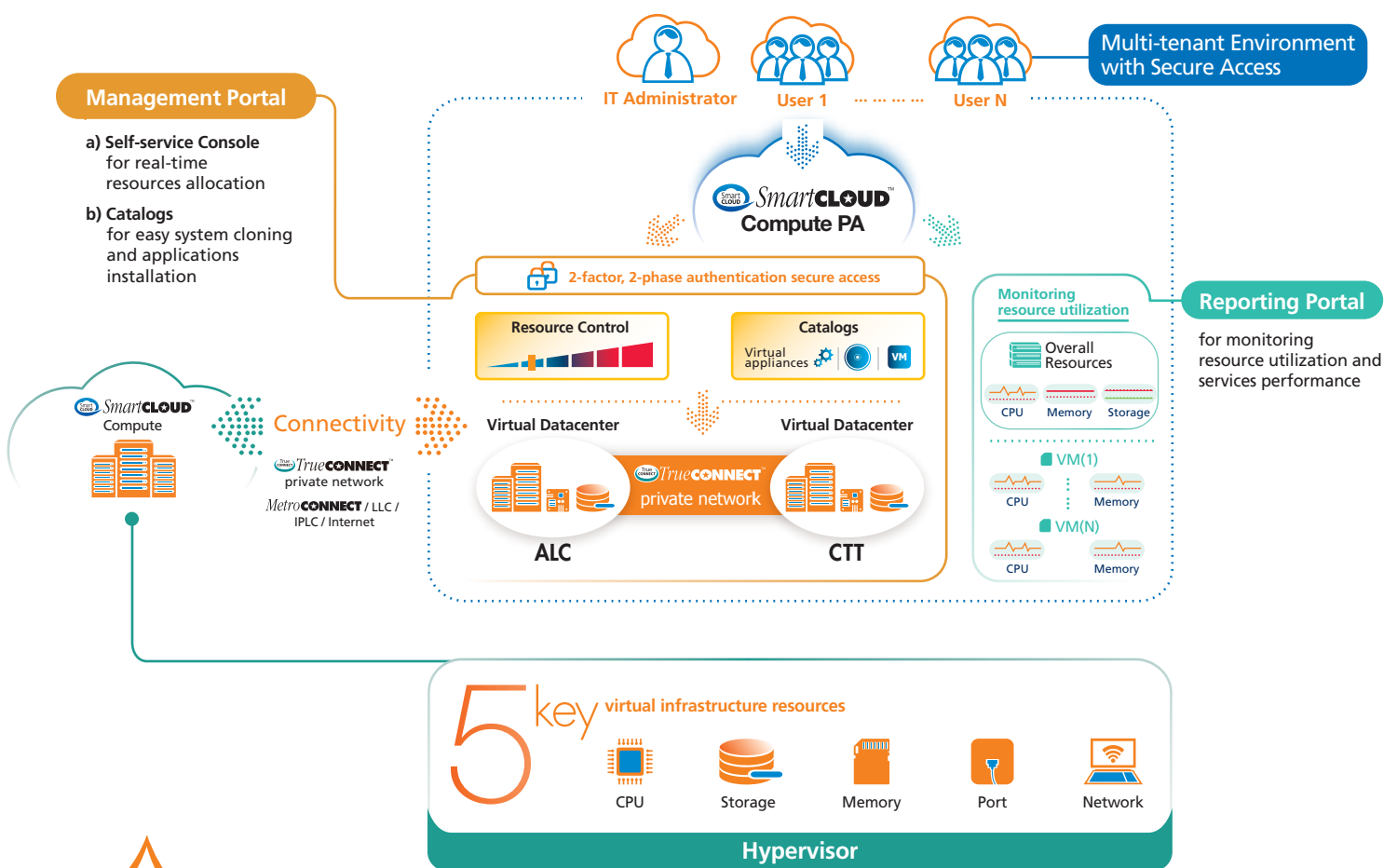
To simplify IT administration, such as troubleshooting, patching and change management, enterprises can deploy and consume pre-configured infrastructure resources from the central catalogs. Traditionally, IT staff needs to conduct the on-site checking and testing of the physical infrastructures for troubleshooting. With SmartCLOUD™ Compute PA, IT team can easily get a full picture and identify the problem, and hence increase IT efficiency.

Policy-based Multi-tenant Environment

To facilitate the sharing of infrastructure resources within an enterprise and allow various users to self-manage their reserved resources, administrators can create users for subsidiary companies, regional offices or business units. Each user has independent 2-factor, 2-phase authentication to access to the management portal, which is controlled by specific policy.

Resource Utilization Monitoring

SmartCLOUD™ Compute PA provides an easy-to-use monitoring and reporting web portal which allows enterprises to review the overall resources (CPU/Memory/Storage) utilization over different timeframes (Daily/Weekly/Monthly/Yearly). Enterprises can even monitor down to virtual machine level for reviewing the server performance.



CITIC Telecom CPC

- W: www.citictel-cpc.com
- Asia Pacific: info@citictel-cpc.com
- Europe and CIS: info-eu@citictel-cpc.com

- Hong Kong T: 852 2170 7101
- Japan T: 81 3 5339 1968
- Estonia T: 372 622 33 99
- Russia T: 7 495 981 5676

- Taiwan T: 886 2 6600 2588
- Malaysia T: 603 2280 1500
- Poland T: 48 22 630 63 30
- The Netherlands T: 31 20 567 2000

- Mainland China (Toll Free): 400 651 7550
- Singapore T: 65 6220 6606